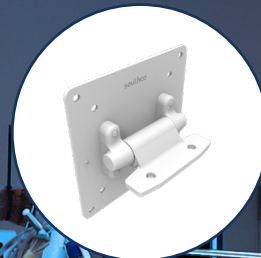
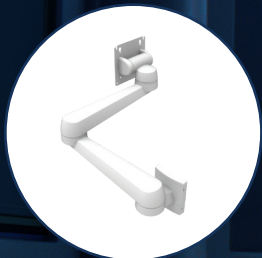


southco®

Engineered Access Solutions for Medical Equipment

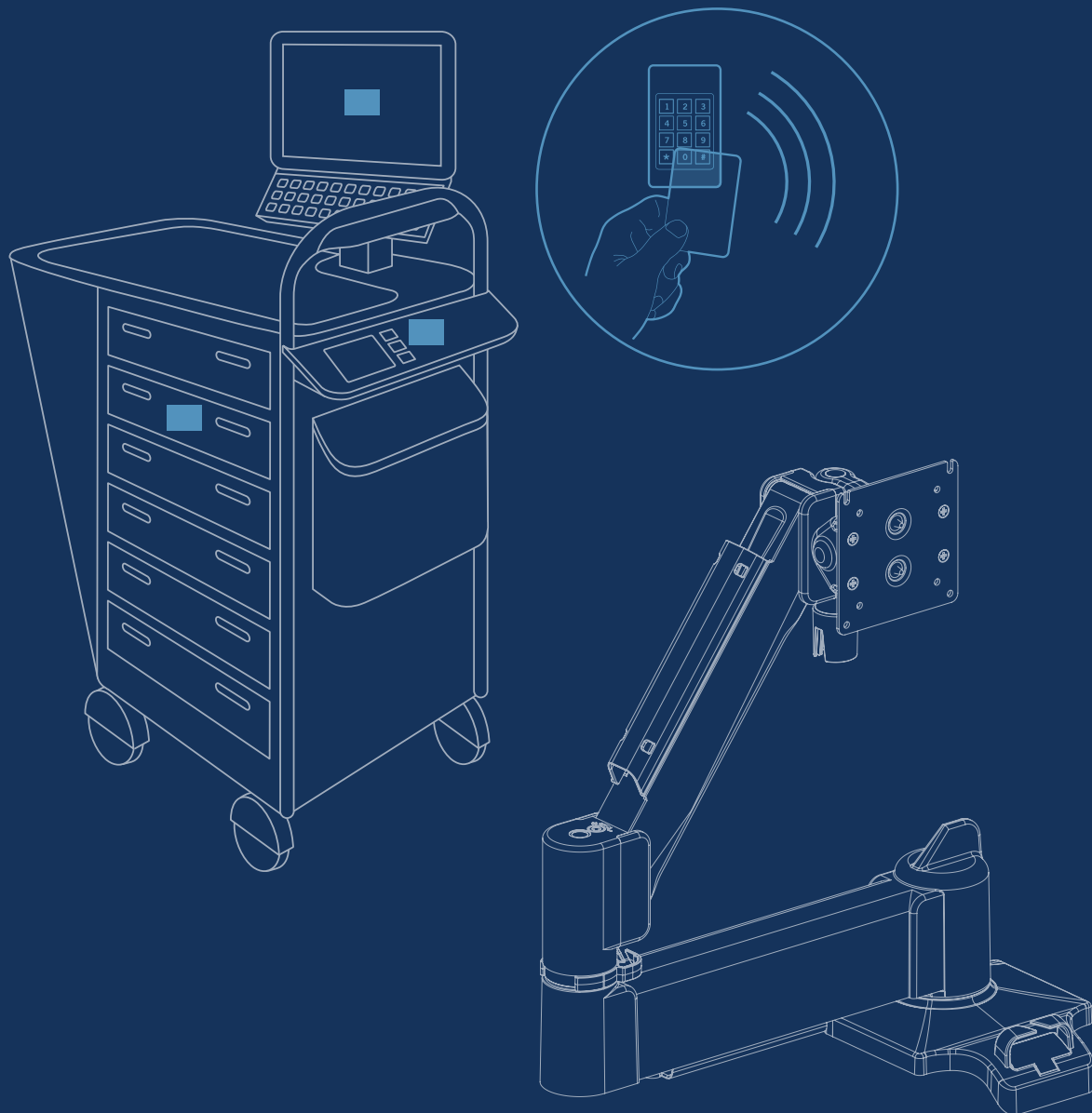


Supporting the Medical Industry

Innovative access control and positioning hardware from Southco enables medical device companies to design safe, secure and intuitive products for critical environments.

Are you selecting the right hardware to enhance your medical device?

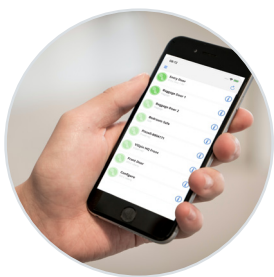
For over 70 years Southco has helped Medical Device Manufacturers to overcome engineering challenges, enabling the medical industry to offer an enhanced end user experience and increased security to help meet regulatory requirements and patient needs.





Enhance User Experience with Southco touch points

Your medical equipment's touch point mechanisms have the power to make a big impact in your end users' experience. We design our access hardware with this in mind, delivering innovative touch point solutions that provide safety, security and ergonomic operation.



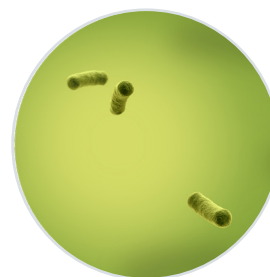
Electronic Safety & Security

Electronic access and hidden solutions allow for heightened security and remote monitoring of access to storage areas containing medications or sensitive documents.



Ergonomics

Achieve intuitive, ergonomic positioning of the display or touchscreen on your medical equipment with Southco's position technology Monitor Mounts and Arms.



Hygiene

Reduce bacteria count and keep high touch surfaces clean with our Microban integrated and IP69K certified solutions.

Intelligent Access Control & Regulatory Compliance

Electronic Security & Safety

Replacing mechanical locks and latches with electronic alternatives, significantly enhances the access control to critical equipment. Electronic Access Solutions remove the need for physical keys and facilitate a seamless transition to smart healthcare, including:

- eliminating cost associated with physical key management
- equipment access via RFID cards and smart devices
- data capture for reporting and audit trail
- seamless integration with existing systems and software
- enhanced access control of critical storage equipment



*R4-EM Electronic Rotary Latches
H3-EM Electronic Locking Swinghandle (right)*



EA BT Bluetooth Controller



Access secure equipment
with your smart device



Controlled Positioning of Equipment

Ergonomics

Enhance functionality, precision and user experience with Southco's positioning technology solutions.



Laboratory Analyser

Counterbalance mechanisms enable easy positioning and securing of heavy lids with zero effort



CB-11 Counterbalance Hinge



Medical Cart

Monitor mounts provide an ergonomically enhanced user experience



*AV-D40
Arms & Mounts*



Laboratory Equipment

Position technology hinges prevent drift and repeated manual adjustment.



ST, E6 & G6 Hinges

Safeguarding Hygiene & Safety

Hygiene

Selecting the proper engineered hardware enables a safe and intuitive means for operating equipment used in critical environments

- latches can be designed to support your IP69K application
- captive hardware reduces the risk of falling or lost parts
- built in Microban antimicrobial technologies prevent bacteria growth
- latches with visual indication provide a quick assessment of equipment access



*IP69K Grade Hygiene E3 Compression Latch (left)
Visual Access Indication C2 Lever Latch (middle)
Quick Access & Captive Fasteners (right)*

PROTECTION THAT LIVES ON
MICROBAN

Enhanced Performance of Critical Devices

Performance

Medical device reliability is crucial to patient care, user safety and operational performance. Southco has worked alongside some of the world's biggest medical and laboratory equipment manufacturing brands.



Laboratory Centrifuge

Prevent accidental opening of critical equipment and secure stability of devices during vital procedures.



*R4-EM-05 Mini Electronic Rotary Latch
R4-05 Rotary Latch (right)*



Dialysis Machine

Provide sealing and compression on equipment of all sizes, withstand vibration and eliminate noise.

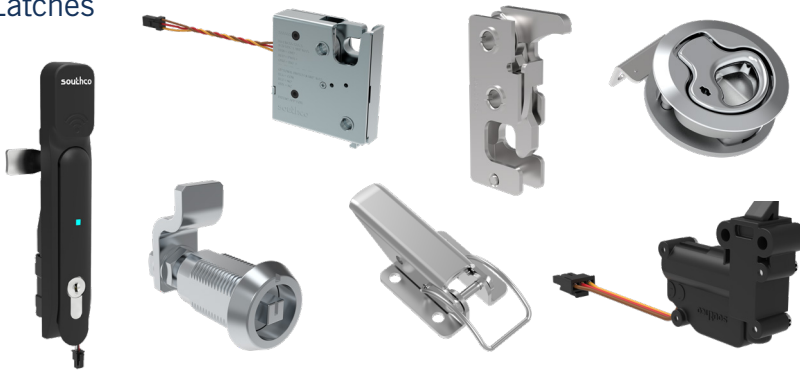


*R5 Heavy Duty Draw Latch
C3 Push to Close Latch (right)*

About Southco

Southco, Inc. is the leading global designer and manufacturer of engineered access solutions. From quality and performance to aesthetics and ergonomics, we understand that first impressions are lasting impressions in product design. For over 70 years, Southco has helped the world's most recognized brands create value for their customers with innovative access solutions designed to enhance the touch points of their products in transportation and industrial applications, medical equipment, data centers and more.

Latches



Fasteners



Monitor Mounts



Handles



Hinges



Find out more on
our Medical Industry
page

southco®

Americas Global Headquarters
Concordville, PA, USA
Tel: (1) 610 459 4000

Europe Headquarters
Worcester, UK
Tel: (44) (0) 1905 346722

Asia Pacific Headquarters
Hong Kong, China
Tel: (852) 3127 1503