

southco®

Engineered Access Solutions for Off-Highway Equipment



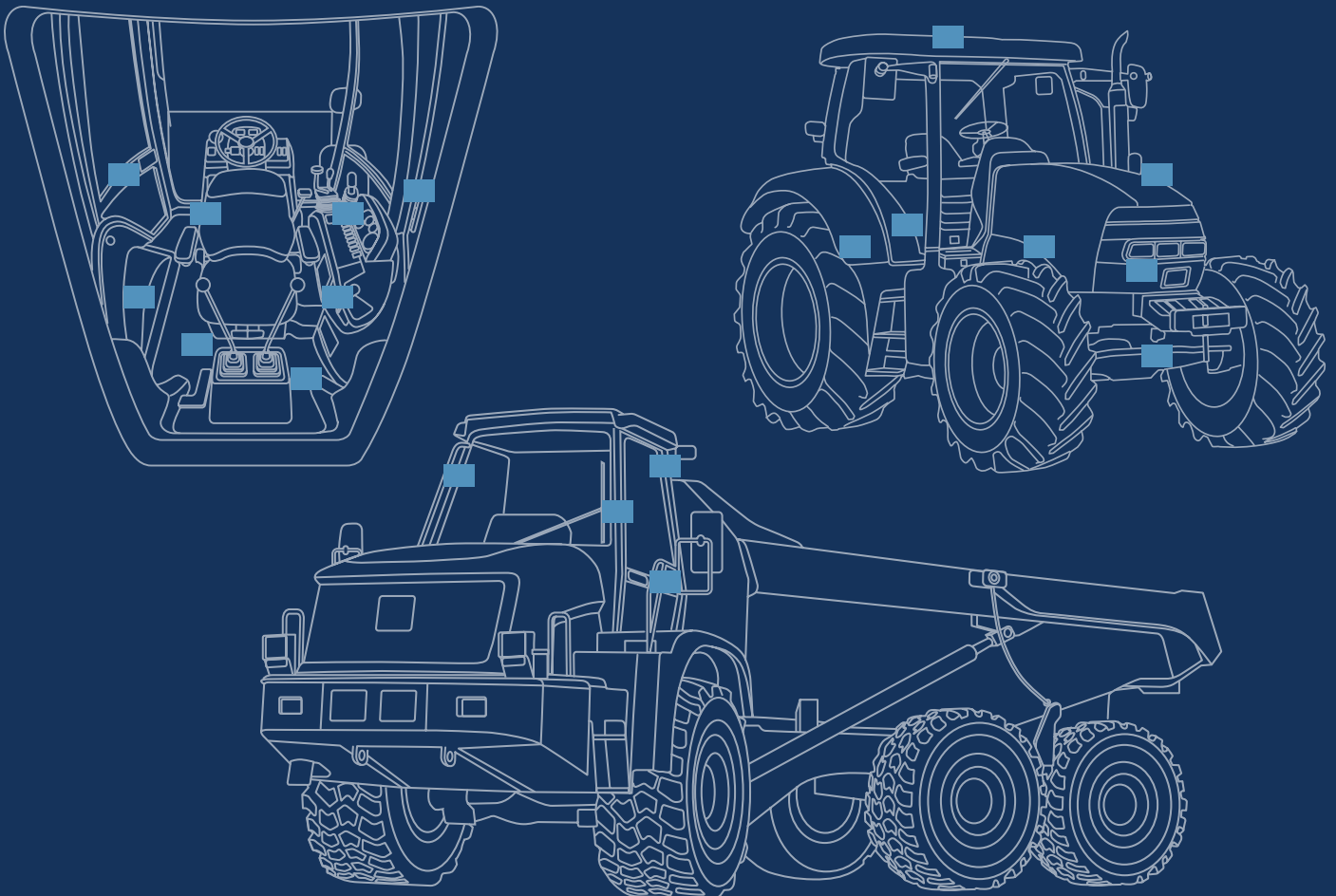
Safety. Ergonomics. Innovation.

Incorporating the latest technologies into equipment and vehicles, with the goal of enhancing productivity is a challenge that Off-Highway equipment manufacturers face every day.

Southco helps meet this challenge by designing and developing innovative access hardware solutions that meet your operator ergonomics and safety needs. Our products deliver dependable performance in rugged off-road conditions and improve Off-Highway equipment productivity.

Engineering, quality and support – wherever you need it.

With a global manufacturing footprint and local support, Southco can produce our products close to our customers, reducing tariffs, lead times and shipping costs. From initial design to shipping, you can expect the same level of quality and engineering support anywhere in the world.





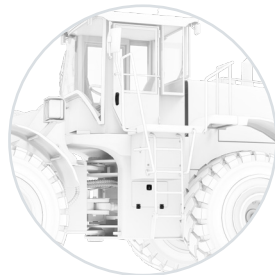
Enhance equipment productivity with touch points.

Your customer touch point mechanisms have the power to make a big impact on the overall productivity of your Off-Highway equipment. We design our access hardware with the end user experience in mind, delivering innovative touch point solutions designed for tough working environments that provide safety, security and ergonomic operation.



Entry Door Solutions

Electronic access and hidden latching solutions allow entry and exit points to be locked and unlocked remotely for operator convenience and advanced security.



Chassis Solutions

Dependable and robust hardware withstands heavy, repeated use by providing simple operation, vibration resistance and reliable performance in any environment.



Interior Solutions

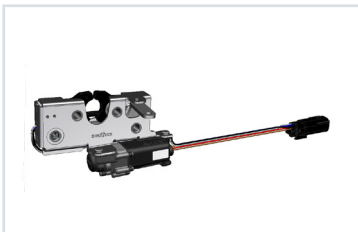
Concealed access solutions and hardware designed with ergonomic operation provides seamless functionality, safety and comfort in the cab, improving the operator experience.



Protect
equipment
with a push
of a button.

Electronic Security & Safety

Southco's Electronic Access Solutions (EAS) provide an extra layer of security and safety for a variety of interior and exterior Off-Highway equipment applications including entry door, chassis and cab interiors. Electronic locks and access controllers easily integrate with smart and autonomous vehicles, delivering the same level of convenience that operators expect from their other connected devices.



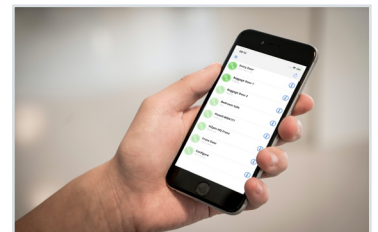
Electronic Locks

Secure and protect tool cabinets and access panels across Off-Highway vehicles with concealed electronic latches.



Access Controllers

Connect electronic locks with a variety of access control devices that network directly with the equipment operating system.



Remote Monitoring

Monitor equipment access remotely from your phone or tablet, from anywhere in the world.



Tried and tested,
to get the job done.

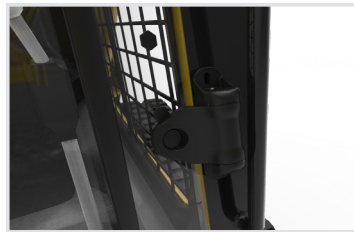
Entry Door Solutions

Entering and exiting equipment should be the easiest task your customers complete each day. We offer a premium quality range of interior and exterior entry door access solutions that are durable, easy to use and provide lower overall cost of ownership over time.



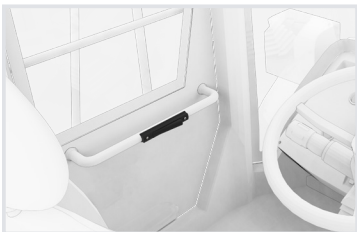
Entry Door Latch Systems

Secure the main point of entry to the vehicle with rugged and dependable remote latching systems designed to work together to provide reliable access control.



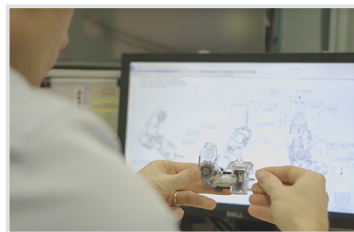
Entry Door Hinges

Hold entry doors open with ergonomic position control hinges that keep doors in place for safe and easy access.



Emergency Escape

Quickly exit equipment with hinges that hold heavy doors and windows open and safely in position.



Customized Solutions

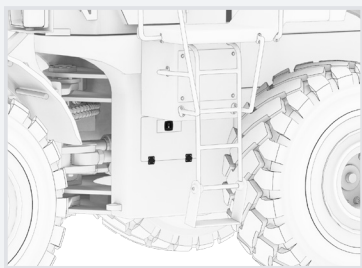
If you can't find a product that suits your needs, contact us to modify one of our standard products or customize a solution for your unique application.

Say goodbye
to dirt and noise.



Chassis Solutions

Prevent unauthorized access to the chassis and improve routine maintenance activities with robust, reliable and compact latching and hinging solutions designed to keep dirt and dust out, and reduce noise caused by heavy vibration. Our access hardware is proven to last the lifetime of the vehicle, helping to lower overall cost of ownership by reducing the need for expensive maintenance contracts.



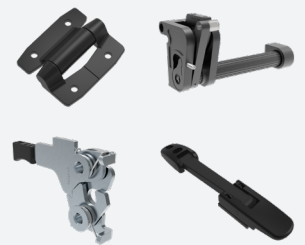
Service Panels

Secure equipment service panels against unauthorized access and reduce maintenance costs with rugged and dependable latching.



Hood Latching & Hinging

Open and close heavy engine hoods with ease with latches designed to accommodate gloved hands and position control hinges that hold hoods in place.



Take the office off-road.

Interior Solutions

With operators spending most of the day inside the vehicle, safety, comfort and satisfaction are top priorities. Positioning hinges and monitor mounts designed with integrated constant torque allow operators to fully adjust equipment to their unique preferences. From the angle of the armrest to the position of touchscreen monitors, our broad range of access hardware ensures that everything is held securely in place during operation, and is easily accessible when needed.



Monitor Mounts

Easily move and position monitors, armrests and headrests into place with one hand.



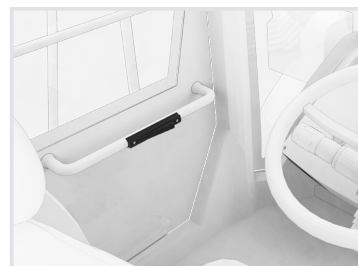
HVAC Panels

Tool-free access of heating, ventilation, air conditioning and fuse panels for fast and easy maintenance and repair.



Interior Storage Areas

Secure access panels, doors and storage compartments with cam latches, and hold them open with ergonomic hinges.



Emergency Escape

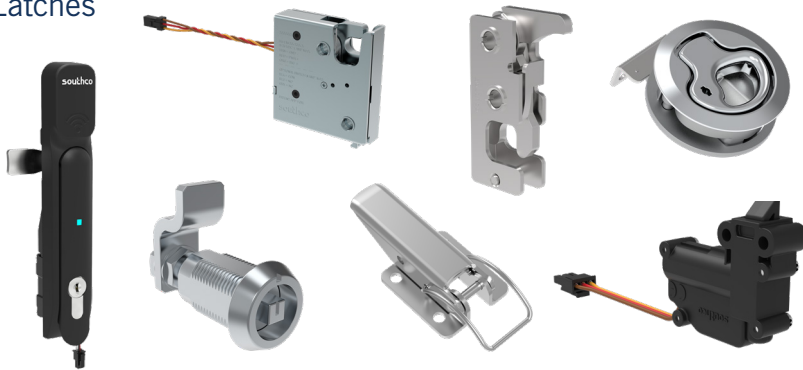
Quickly exit equipment with hinges that hold heavy doors and windows open and safely in position.



About Southco

Southco, Inc. is the leading global designer and manufacturer of engineered access solutions. From quality and performance to aesthetics and ergonomics, we understand that first impressions are lasting impressions in product design. For over 70 years, Southco has helped the world's most recognized brands create value for their customers with innovative access solutions designed to enhance the touch points of their products in transportation and industrial applications, medical equipment, data centers and more.

Latches



Fasteners



Monitor Mounts



Handles



Hinges



Americas Global Headquarters
Concordville, PA, USA
Tel: (1) 610 459 4000

Europe Headquarters
Worcester, UK
Tel: (44) (0) 1905 346722

Asia Pacific Headquarters
Hong Kong, China
Tel: (852) 3127 1503