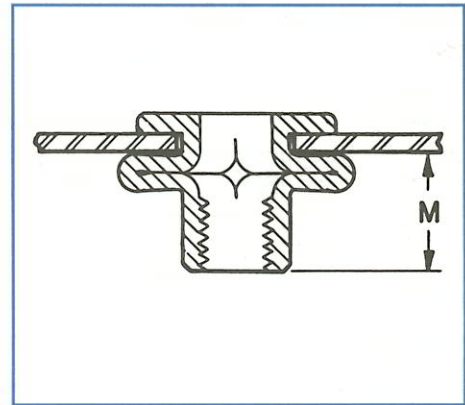
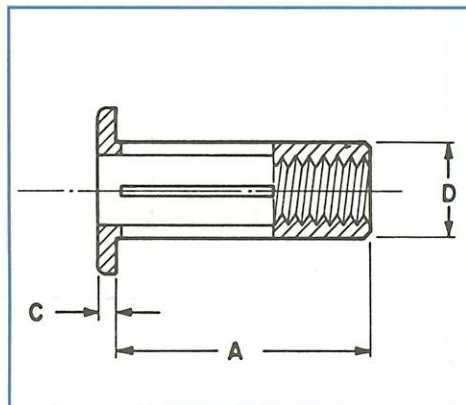
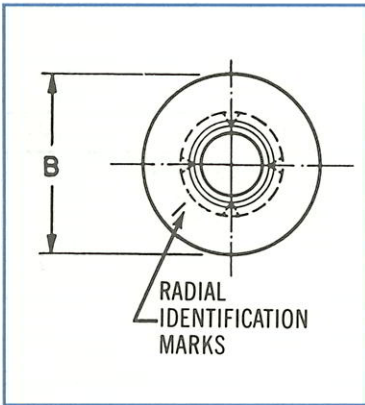
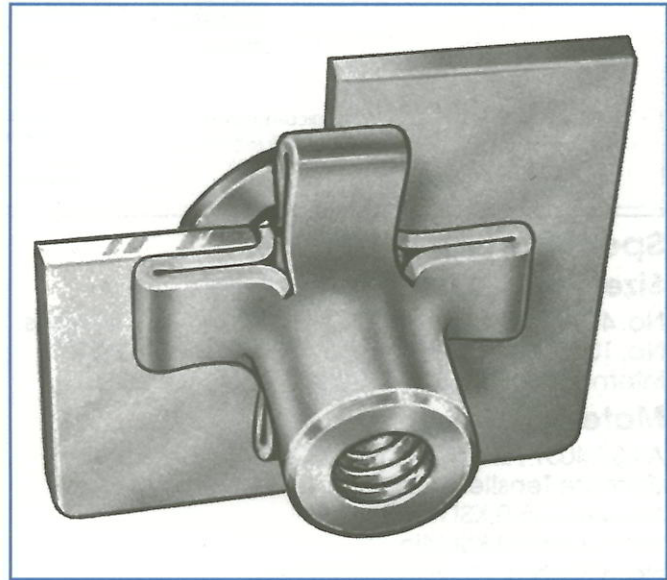


Flat head PLUSNUT® fastener — Unified Thread System

Developed specifically for automotive, electronic and appliance assembly. Also, suitable for wide applications throughout industry.

PLUSNUTS are blind, threaded fasteners recommended for rigid fastening in sheet metal, fiberglass and plastics. Slotted shanks split and form large flaps which evenly distribute installation and working loads over a large area. For example, PLUSNUTS provide excellent anchors for seat belts, car top carriers and mirror mounts. PLUSNUTS also offer solutions to many other fastening problems because of these outstanding advantages over other blind fasteners.

- Superb pull-out strength
- Wide grip range
- Exceptional torque and thread strength



Specifications

Thread Size*	Type Number	Ident. Mark	Grip Range †		A ±.015	B ±.015	C Nom.	D Max.	M Nom.	Inst. Drill Size	Inst. Hole Size		Wt. (Lbs./1000)		
			Min.	Max.							Min.	Max.	Alum.	Brass	Steel and Stainless
4-40	4P90	Blank	.020	.090	.484	5/16	.025	.169	.250	11/64	.170	.175	.70	2.21	2.01
	4P150	1-Rad.	.090	.150	.562	5/16	.025	.169	.250	11/64	.170	.175	.75	2.50	2.27
6-32	6P150	Blank	.020	.150	.656	7/16	.032	.208	.335	#4	.209	.214	1.43	4.84	4.40
	6P270	1-Rad.	.150	.270	.765	7/16	.032	.208	.335	#4	.209	.214	1.57	5.30	4.82
8-32	8P150	Blank	.020	.150	.656	7/16	.038	.241	.340	C	.242	.247	1.78	5.86	5.33
	8P270	1-Rad.	.150	.270	.781	7/16	.038	.241	.340	C	.242	.247	1.90	6.51	5.92
10-32	10P175	Blank	.020	.175	.781	1/2	.038	.272	.425	I	.273	.278	2.57	8.72	7.93
	10P320	1-Rad.	.175	.320	.921	1/2	.038	.272	.425	I	.273	.278	2.89	9.67	8.79
1/4-20	25P280	Blank	.020	.280	1.000	5/8	.058	.346	.505	S	.347	.352	5.28	17.83	16.21
	25P500	1-Rad.	.280	.500	1.234	5/8	.058	.346	.505	S	.347	.352	6.08	20.41	18.55
5/16-18	31P280	Blank	.020	.280	1.141	3/4	.062	.437	.570	7/16	.438	.453	9.26	31.15	28.32
	31P500	1-Rad.	.280	.500	1.375	3/4	.062	.437	.570	7/16	.438	.453	10.56	35.26	32.05
3/8-16	37P280	Blank	.020	.280	1.218	7/8	.088	.514	.605	33/64	.515	.522	14.09	47.07	42.79
	37P500	1-Rad.	.280	.500	1.437	7/8	.088	.514	.605	33/64	.515	.522	15.36	51.50	46.82

*Both UNC and UNF threads are available in No.10 and larger sizes.

CODE: Diameter and grip range as tabulated. First letter of type number indicates material: "A" for aluminum, "S" for steel, "SS" for stainless steel, "BR" for brass.

EXAMPLE: S10P175 — Steel, No. 10-32 Internal Thread, .020 — .175 Grip Range.

†Additional Grip Ranges are available.